



Three Lakes Model Railroad Club
Volume 3, Number 7

1st 100% Club in Wisconsin
July 2012

I Love a Parade: a Three Lakes 4th of July

by R.G. Blocks

Our town was voted the Single Best Town in America. It surely is. Folks across the nation produced the votes to prove it. It was not further debated in the Supreme Court, nor have we been relegated on the evening news or by our valued neighbors. Our 4th of July Parade reflects the positive attitude of a thankful people. We are grateful.



Our volunteers in part were captured (photo left) L-R, Jim Jamicich, Barb Jamicich, Roger Blocks, Sam Ivankovic, James Jamicich (with banner), Daniel Ivankovic, Laura Jamicich, Anna Jamicich and Bob Dumke. On the right Three Lakes Town Chairman, Don Sidlowski lined us up 1st in the parade (after the Fire Trucks). We would finish the parade before some groups began marching. Lots of good positive feedback!

Three Lakes Model Railroad Club – Turn

This was a first year for Three Lakes Model Railroad Club parade participation. Mike Lehne of Rhinelander kindly offered his F series diesel in UP colors to both Rhinelander and Three Lakes railroaders for such purpose. We accepted at Three Lakes. It was a health issue that keep RRA folks out of their parade. They were in our hearts.



Above (L-R), Bob Dumke and Mike Lehney pose in front of Mike's creation.

The Three Lakes 4th of July parade is a constant that year to year changes in complexion, content and at times players. Length? About the same each year. Width? About the same; wide enough to distribute candy. Noise volume? About the same; bands and fire trucks add a flavor. Attitude of participants? About the same; thankful and generous.



Three Lakes Model Railroad Club – Turn

Pat Dumke (prior page, in the truck) purchased and distributed hard candy to the rest of us who walked along handing out candy to the cheering throngs. Barb Jamicich (prior page bottom right) handed out candy to anyone potentially needing dental work or possessing a sweet tooth. I specialized further and gave candy only to those over the age of 70 educated in public schools. This approach found me as the lucky guy who was in turn offered dinner by four very nice gray haired ladies. Candy is dandy.



Cousins James Jamicich (left) and Daniel Ivankovic (right) lead our portion of the parade with a sign boldly proclaiming “Three Lakes Model Railroad Club”. They are flanked by Sam and Slavko Ivankovic and trailed by sisters Anna and Laura Jamicich with Mike

Three Lakes Model Railroad Club – Turn

Lehne on their flank. Our mix of soft and hard candy promised to either crack bicuspid or loosen fillings of the unwary. I was told we satisfied the normal male requirement for both necessary food group choices (those being hard and soft candy).



I'm told that about half the chairs set along the side of the parade route had been in place from the preceding evening. Mike's engine brought many comments after the parade; wow, original, huge, complete, neat idea, etc. I'd thus assume most folks in chairs were not dozing; but, the sun was out and the air warm. The horn kept 'em perky.

Three Lakes Model Railroad Club – Turn



Katherine Lehne (left), drove the parade and gets credit for insuring Mike got there on time despite a flat tire. She also gets credit for cheering him on when sprucing up the engine float for this parade. It looked great.

We heard that Katherine subsequently hurt an arm and may need to return to winter quarters for doctoring.

Paul Wussow took many photos of the parade and I've mixed some in with my

own to try and capture the spirit of our modest contribution to rail fun in Three Lakes Wisconsin. Hope you had a great day as well. Don't forget to brush your teeth.

Measuring up

by P. A. Wussow

This little story is about one way to capture and retain information you need to draw a plan so you can build a model.

As some of you know I have been working on the building of a model of the Starks Seed Potato Warehouse along the SOO Line main east of Rhinelander in Stella Township (Three Lakes Turn Feb. 2012). To be able to build a model you have to have a set of plans to work from. To draw up the plans one needs to have reliable measurements that provide vertical and horizontal measurements that you can apply. Our scheme of gathering photographic information is as follows.

Simply use your camera, a buddy and measuring tape to document information.



First take a photo of what is being measured (the overall view), then zoom in and get the actual measurement (the specific view).

Three Lakes Model Railroad Club – Turn

At the same time get both structural (in this case a rock wall) and door-frame construction documented. This is generally a two- person task.



Capture both the frame information and overall size.



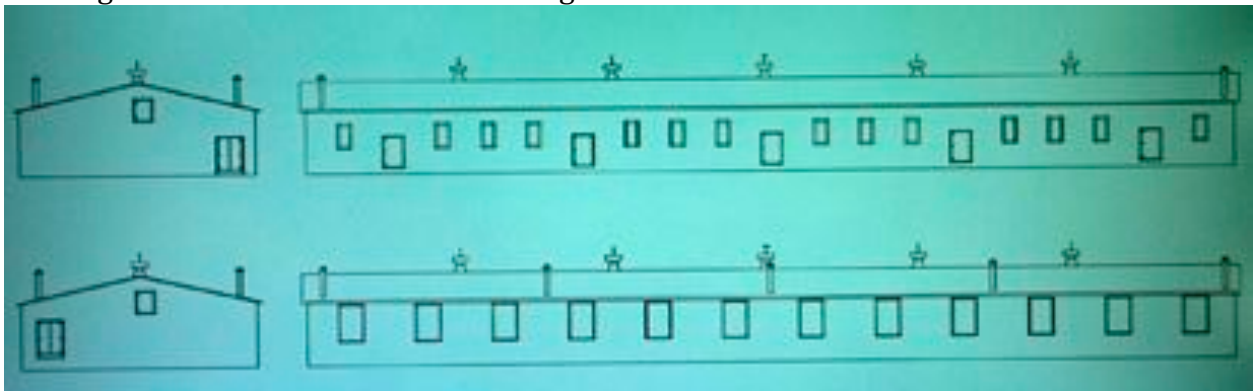
With full size door and window information you can measure the building. X number of windows, Y inches tall spaced Z apart and you've a good estimating tool.

Three Lakes Model Railroad Club – Turn

A window, typical of all those along the southern wall was selected and a photo shot to illustrate how it and the wall were constructed. What you cannot see is the depth of the wall. It is significant. This is a potato warehouse and was built to last.



One final photo capturing the width was made and below is the start of a final drawing. I will need to add detail drawings of the windows and doors.



Please note that we waded in snow to capture these shots. Keep your camera equipment warm and be conscious of avoiding lens frost or frozen auto focus elements. Choice of a more photogenic partner is advised.

Railroad Happenings: those Semi-local events...

July 21, 2012- **Rail fair**- Copeland Park- LaCrosse, WI

Info at: www.4000foundation.com

July 29 – August 4, 2012 it's the 77th

National Model Railroad Convention, Grand Rapids, MI.

The host club is at www.grmrhs.org a 100% NMRA club.

For info on the convention: www.gr2012.org

Seventy fantastic layouts within one hour of the 12th best hotel in North America (Amway). Let's all go!

Aug 11-13, 2012 **per Northeast Wisconsin O Gaugers**

Calumet County Steam Engine Show Superintendent: Jim Bastian

www.rllines.com/

Aug 31 - Sept 3, 2012 **per Northeast Wisconsin O Gaugers**

Calumet County Steam Engine Show Superintendent: Jim Bastian

www.rllines.com/

Sept. 13-16, 2012- **Soo Line Historical Society** Annual Convention

Thief River Falls, MN Info at: www.sooline.org

Sept. 29-30, 2012 **Northwoods Model RR Club**

Annual Train Show And Swap Meet Saturday September 29, 2012

10 A.M. to 4 P.M. & Sunday September 30, 2012 10 A.M. to 3 P.M.

At: MHLT Elementary School, 7450 Titus Drive, Minocqua, WI call

715-358-2570 or 715-356-6656

Oct13, 2012 **NMRA Winnebagoland Division Fall Meet** in Wausau,

WI <http://www.wld-nmra.com>

Oct 21, 2012 **Model RR Show and Swap Meet** – Circle B

Recreation 6261 Hwy 60 – Cedarburg, W

Nov 10 – 11 , 2012 **Trainfest**, Wisconsin State Fair Park, West Allis,

WI Info at: www.lammscape.com/cedarcreek

On a Spur and loading...

Jan 22, 2012 **Northeast Wisconsin O Gaugers Point Beach**

Visitor Center Train Show 10am - 4pm Superintendent: Pete Kober

www.rllines.com/

Jan 26, 2012 **GREAT TRI-STATE RAIL SALE**, La Cross Center 2nd &

Pearl Streets, La Crosse, WI 54601

May 2 – 5, 2013 **Midwest Region Convention**, Host is Central

Indiana Div <http://cid.railfan.net/MP50.html> Indianapolis, IN

Three Lakes Model Railroad Club – Turn

July 14 – 20, 2013 NMRA Convention, Atlanta, Georgia

Will be covered at: <http://www.nmra.org/>

July 13-20, 2014 NMRA Convention, Cleveland, Ohio

Will be covered at: <http://www.nmra.org/>

Meets On the Main Line ...

Central Wisconsin Model Railroaders, Ltd, business 1st Wed, social 3rd Wednesday, 7PM basement, Bancroft Depot, Portage County Historical Society, Heritage Park, Washington Ave, ex GB&W tracks, Plover, Wisconsin. See <http://www.trainweb.org/cwmr/>

Clipper City Model Railroad Club, membership meeting 1st Thursday 7:30 PM, Iron Horse Barn, Manitowoc County Expo Fair Grounds, Manitowoc, Wisconsin (HO, N, O). Q? jimchadek@charter.net and see <http://www.clippercitymodelrailroadclub.org/>

Paper Valley Model Railroad Club (501 c 3) meets Thursday 7 – 9 PM and Sat 1 – 3 PM W2221 Block Road, Kaukauna, WI 54130. See <http://www.papervalleymodelrailroad.com/>

Wisconsin Valley Railroad Club, meets Thursday 7:45PM at 403 McIndoe St (Yawkey House basement), Marathon County Historical Society, Wausau, WI (enter through rear door). Rod Beckman, Pres 715-842-7232 See <http://www.wld-nmra.com/Wausau-WiscValley.htm>

Sheboygan Society of Scale Model Railroad Engineers, Ltd. Meets / open Tuesday and Thursday evenings, at Sheboygan Railroad Museum, 1001 N 10th Street, Sheboygan, WI. See: www.sssmre.org

Northwoods Model Railroad Club, business 3rd Tuesday 7 PM Minocqua Museum, Work sessions every Wednesday 7 – 9 PM / Eric Drochner, PO Box 799, Woodruff, WI 54568-0799. See: http://www.wld-nmra.com/northwoods_model_rr_club.htm

Rhineland Railroad Club, business 1st Wednesday, 7 PM at the Logging Museum Depot, operating / maintenance Wednesday 7 PM same location or 123 Brown Street, Rhineland, WI with modular layout. See www.rrahome.org

Three Lakes Model Railroad Club, dates open, meet at members homes and / or with the Rhineland Railroad Association. See www.tlmrc.org
Questions, comments: call Superintendent: Paul A Wussow 312-543-4989
Praise or congratulatory: call Editor: Roger G Blocks 262-989-4338

Rhinelanders Soo Line Scale house

by P.A. Wussow

The idea of building a model of the Soo Line Scale house had been a topic of mine for a project aimed at NMRA members attending the WLD Fall Convention in 2013 to be hosted by the RRA and the TLMRC in Rhinelanders.

Interest in railroad use of scales was covered in the June issue of the NMRA Magazine with an article about scale tracks. On page 9 of the July issue there is a short letter to the Mail Car along with photos of the Scale House located in the SOO Line, /WC Yard in Rhinelanders WI taken in 1967 and 1969 provided by Bob Johnson.

Here are two of my photos of the very same Rhinelanders Yard Scale house. More photos are on the TLMRC site.



June 2006 at the Park



August 1997 in the WC Yard

We have the restored scale house on site at Rhinelanders' Pioneer Park. We can measure it, photograph it and build models of it.

I am providing drawings of the building on the TLMRC web site www.tlmrc.org. These drawings use full-scale measurements but also generated drawings in HO and O scale. We can generate any scale on request for modelers.

There is also a file called Fold Up that will print an O scale drawing of the scale house without the roof that you just fold on the lines and tape together. Or you can make your own drawings and get more points in AP judging, if you wish.

The idea is to publish the drawings and photos for the Division and Regional newsletters as well as on the RAA and Three Lakes Websites. We invite modelers to build a model of the scale house and bring or send it to the WLD Fall Convention in 2013 for showing or to enter into the division model contest. It is applicable for AP evaluation for structures. It could be your entry in a popular vote contest where we will award prizes.

For materials modelers could use Paper, Wood, Plastic or whatever they choose. We would ask for a description of construction technique to accompany the models and AP

Three Lakes Model Railroad Club – Turn

or contest entry forms if you want to have your model judged in the NMRA Division contest and / or for the NMRA AP program.

This little structure would fit nicely on almost any layout or module and could be part of a diorama that may include a scale track that could be part of the Civil AP program. Try it out on your layout by simply printing a copy and pasting it together.

Building a model of the SOO Line scale house will be a subject of the Three Lakes Turn newsletter to come between now and the convention.

View from the Tower

by P.A. Wussow

On June 23rd the Town of Three Lakes Fire Department had a successful event featuring Trains and Boats and Planes. Well to tell the truth it was about Boat Races, Airport FlyIn, and in a “by the way fashion” modular model railroad operations. The event was officially the “Shoot Out”.



Boat owners race their boats against a radar clock: guys and gals making waves at the north end of the airport where we (Roger and myself) are volunteer management. This photo looks south at the entire race course and directly down runway 21 at 40D, better known as Three Lakes Muni.

This year we acquired the use of a hanger on the field for the layouts to be setup inside. This kept us out of the sun and fortunately out of the rain.

Due to multiple health issues affecting the members of the Rhinelander club, they were unable to bring their portable modules. We had five Three Lakes members (Bob Dumpke, Jack Zimmer, Brendan Marquardt, Roger and myself). Jack along with a couple of RRA members operated on our Three Lakes Modules. Thanks to Roger’s fine work, as reported in the last few newsletters, we had scenery on the modules this year.

The operations were somewhat different as we were running up to 3 trains in HO and On30 on the same modules at the same time. Wayne Campbell’s HO Big Boy was bigger, in length, than any of the narrow gauge engines in On30. I have to say it was all bells and whistles to bring in the public. The effort brought about one hundred folks (kids, parents and grand-folks) down to see the fun.

Three Lakes Model Railroad Club – Turn

We had a great but out of doors location closer to the crowd last year; but appreciated the weather security of a hangar. Perhaps next year we'll do better in our begging.



Above (left) the airport is shown looking east from above Moccasin Lake. There is water under both ends of the airport and under all legs of any approach to a landing on RWY 03 or 21. We were in the rightmost hangar in the foreground.



Paul, Bob and Wayne take a break during their day-long exhibition. Our portable modules (above right) were described last in the March and May 2012 TLMRC Turn newsletter as we worked on scenery. Setup and take down took about 20 minutes for the four sections (two over-run tracks and two freemo style setups).



Best wishes to the RRA folks for a speedy recovery as we missed having your layout at the meet.

This brings me back to a question of a few months ago about taking our modules to the Northwoods Model Railroad Club's 5th annual train show in Minocqua this September 28th to 30th. We will be taking our On30 modules to run inside the RRA Modular layout. Information is on our web site under Northwoods Model RR Club.

As many of you know we had a very nice float in the Three Lakes, 4th of July Parade and the club web site had features of the Independence Day events. There is a special link to the July 4th events on the right side of the home page for those of you who were away from the computers on the fourth.. and here's a shot of Roger who wrote the lead article.

Three Lakes Model Railroad Club – Turn

On July 12th Roger and I represented the three Lakes club at the Connect to Three lakes-2012 event. Along with businesses of Three Lakes the Service Organizations gathered at the High School Gym to share ideas and demonstrate what they are doing with technology in the Three Lakes area.



With our club tied to the world via the Internet we were a prime candidate to show how technology promotes an activity in Three Lakes WI.

During the event I was asked by the Three Lakes Library to have the club present some programs at the library. This will fit in nicely with the NMRA national Education Department Beginners' Course Project.

program on selecting trains for children (of all ages) for Christmas and would have a program around Thanksgiving this year. Additional programs on what to do when you take down the tree would be planned for January.

We are looking at starting with a program on selecting trains for children (of all ages) for Christmas and would have a program around Thanksgiving this year. Additional programs on what to do when you take down the tree would be planned for January.



Perhaps we should congratulate Roger for earning the Chief Dispatcher Certificate in the NMRA Achievement Program. He's worked on it for a number of years but has more recently acquired lots of exposure to a variety of layouts in three different NMRA Divisions. He has become an advocate of JMRI Operations but makes no claims insofar as proficiency. He says he's

going to tear up his Out A Site Mountain area to improve overall operations (but so far hasn't had the time). Meanwhile, he's been working on and documenting his narrow gauge feeder line in On30 called Thunderlake & Outasite in our newsletter.

There is a growing interest in action accessories for the RRA modules. We all know having action along with the trains add to the fun of viewing the modules. Flashing grade crossing lights and gates that operate are one idea. Maybe a red flashing light on the top of a water tower would also be an extra attraction. Dale has suggested that we consider having me give a Clinic on making these accessories as I have done for my AP Electrical Engineering certificate. We can have a make and take clinic in or around the third week in August and build some flashing cross buck lights and tower lights at a very low cost.